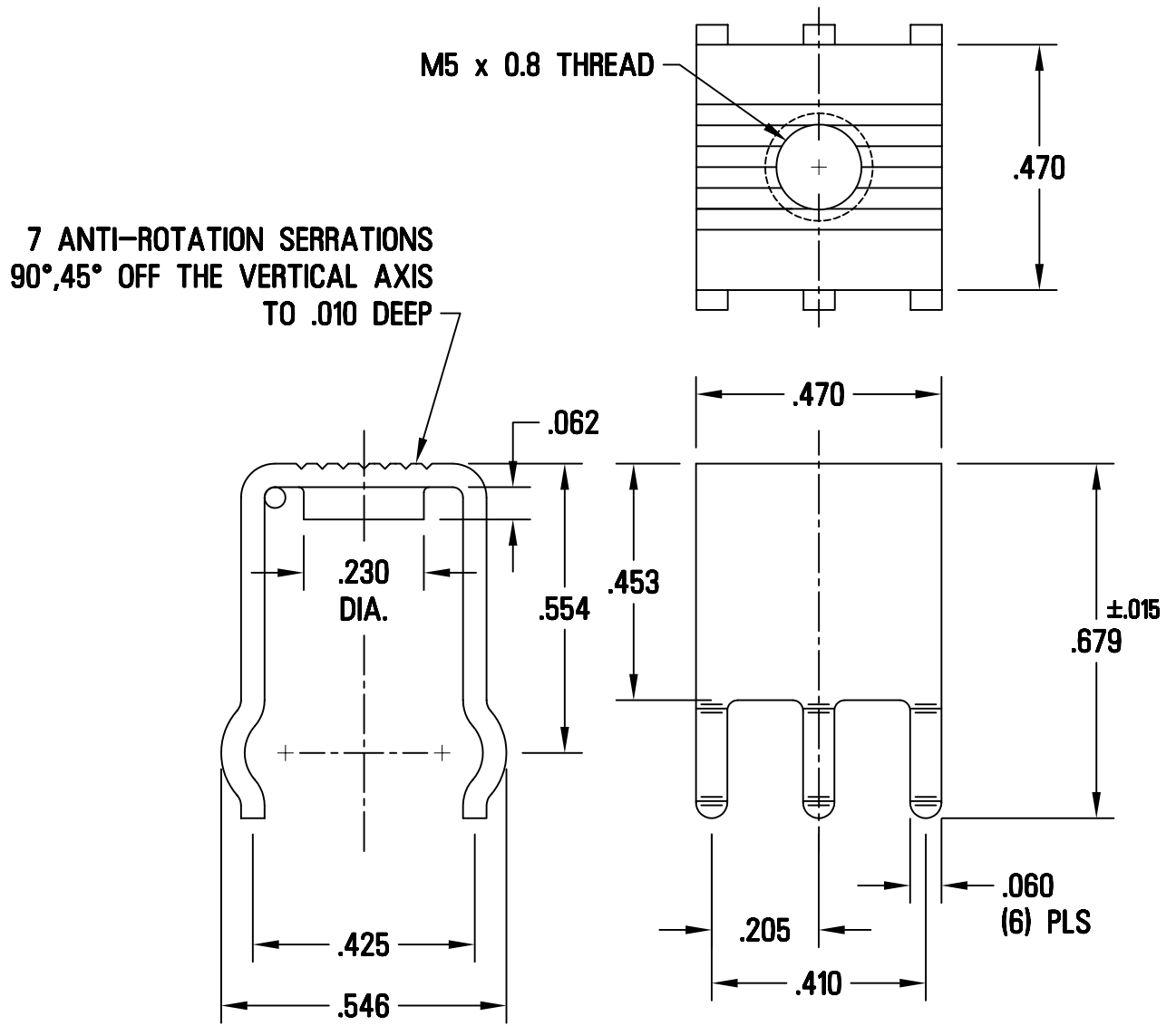


THIS DOCUMENT IS THE PROPERTY OF  
KEYSTONE ELECTRONICS CORP. AND  
SHALL NOT BE REPRODUCED, DISTRIBUTED  
OR USED AS A BASIS FOR MANUFACTURE  
WITHOUT PRIOR WRITTEN PERMISSION  
FROM KEYSTONE ELECTRONICS CORP.



**KEYSTONE ELECTRONICS CORP.**

ASTORIA, N.Y. 11105-2017

PART NAME

PC SCREW TERMINAL

MATERIAL

.045 TH'K COPPER

FINISH

TIN PLATE

DRN BY

BOONE

DATE

1.11.01

APP'D

SCALE

3X

TOLERANCES

INCH [MM]

DECIMAL ±.005 [± ]

ANGULAR ± 1/2°

UNLESS OTHERWISE SPECIFIED

CODE

C

DWG NO.

**9-8196-CU**

DATE

DESCRIPTION

REV.