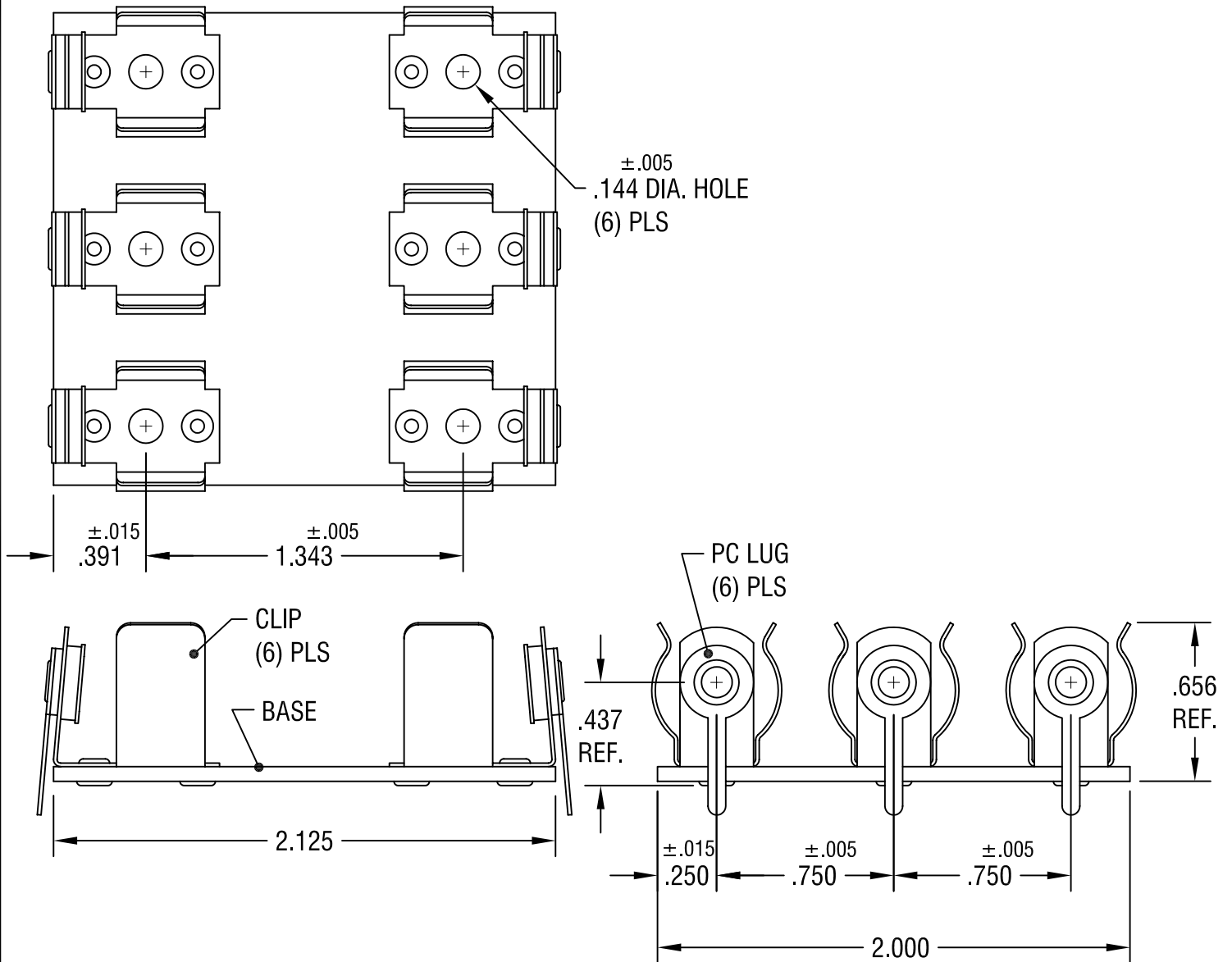


THIS DOCUMENT IS THE PROPERTY OF  
KEYSTONE ELECTRONICS CORP. AND  
SHALL NOT BE REPRODUCED, DISTRIBUTED  
OR USED AS A BASIS FOR MANUFACTURE  
WITHOUT PRIOR WRITTEN PERMISSION  
FROM KEYSTONE ELECTRONICS CORP.



NOTES:

- BASE: MAT'L - .062 TH'K PHENOLIC  
CLIP: MAT'L - SPRING STEEL  
FINISH - NICKEL PLATE  
LUG: MAT'L - BRASS  
FINISH - TIN PLATE

<b>KEYSTONE ELECTRONICS CORP.</b>			
ASTORIA, N.Y. 11105-2017			
PART NAME INSULATED BATTERY HOLDER, (3) 'AA'			
MATERIAL AS NOTED			
FINISH AS NOTED		DRN BY BOONE	DATE 9/30/04
		APP'D	SCALE 1.5X
TOLERANCES	INCH [MM]	CODE	DWG NO.
DECIMAL	$\pm .010$ [ $\pm 0.25$ ]	C	9-2171-4002
ANGULAR $\pm 1^\circ$ UNLESS OTHERWISE SPECIFIED			

DATE	DESCRIPTION	REV.
------	-------------	------