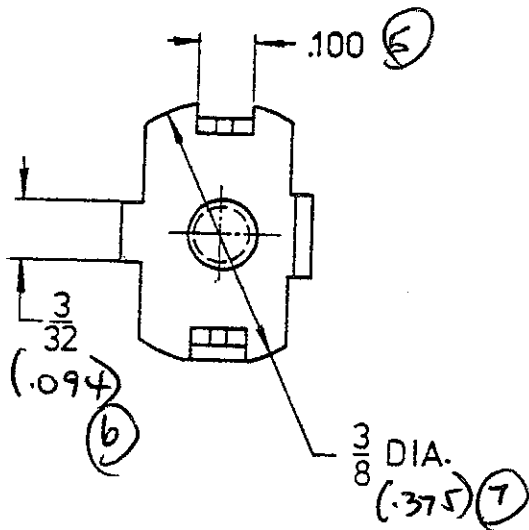
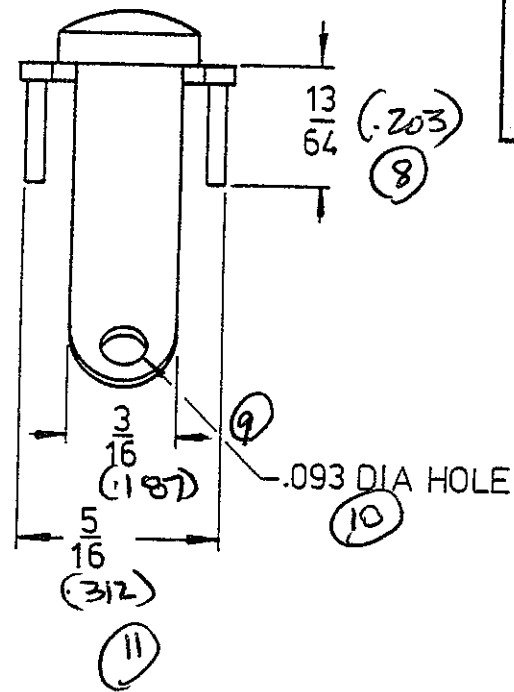


(12) STEEL SCREW
 6-32 TH'D X $\frac{3}{8}$ LG.
 UNASSEMBLED.



NOTE: PARTS SUPPLIED
 UNASSEMBLED.

KEYSTONE ELECTRONICS CORP.
 NEW YORK, N.Y. 10012

PART NAME **SCREW TERMINAL**

MATERIAL (B) .032 STEEL (14)

FINISH
 CAD. PLATE (15)

DRAWN BY L.N. DATE 4.14.82

APPROVED A.A. SCALE

TOLERANCES
 FRACTIONAL $\pm .015$
 DECIMAL $\pm .005$ ANGULAR $\pm \frac{1}{2}^\circ$
 UNLESS OTHERWISE NOTED

DWG. NO.
 9-1248-UN

1-17-81 CHANGE MAT'L FROM BRASS

DATE REVISION

A ISSUE