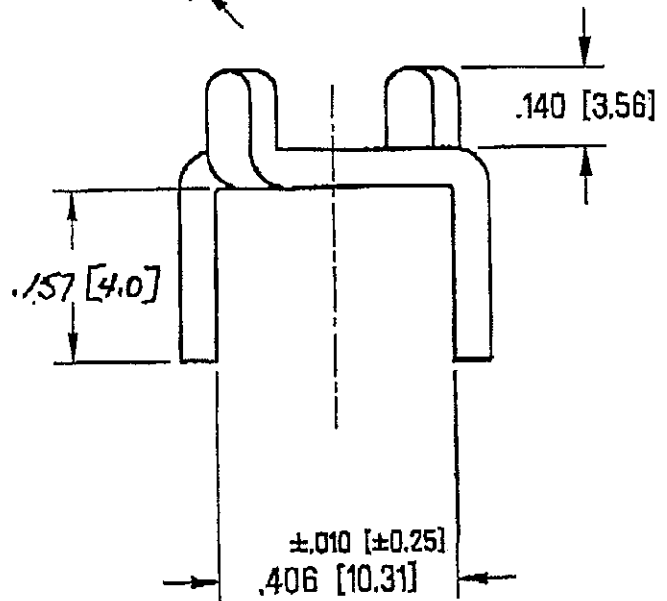
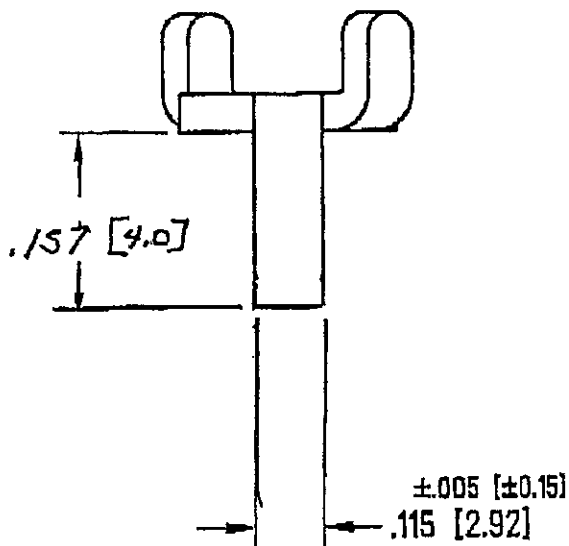
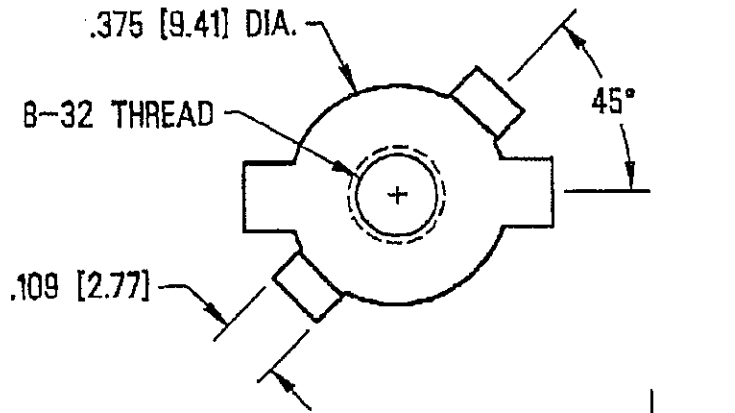
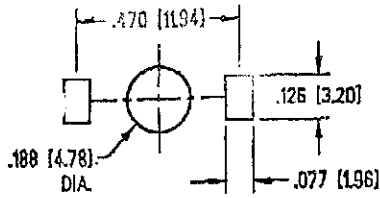


THIS DOCUMENT IS THE PROPERTY OF
KEYSTONE ELECTRONICS CORP. AND
SHALL NOT BE REPRODUCED, DISTRIBUTED
OR USED AS A BASIS FOR MANUFACTURE
WITHOUT PRIOR WRITTEN PERMISSION
FROM KEYSTONE ELECTRONICS CORP.

MOUNTING DETAIL



KEYSTONE ELECTRONICS CORP.
ASTORIA, N.Y. 11105-2017

PART NAME

SCREW TERMINAL

MATERIAL

.064 [1.63] TH'K BRASS

FINISH

TIN PLATE

DRN BY

BOONE

DATE 7.1.99

APP'D

SCALE 3X

TOLERANCES INCH [MM]
DECIMAL ±.015 [±.38]
ANGULAR ± 2°
UNLESS OTHERWISE SPECIFIED

CODE
C/M

DWG NO.

9-1207-157

DATE

DESCRIPTION

REV.