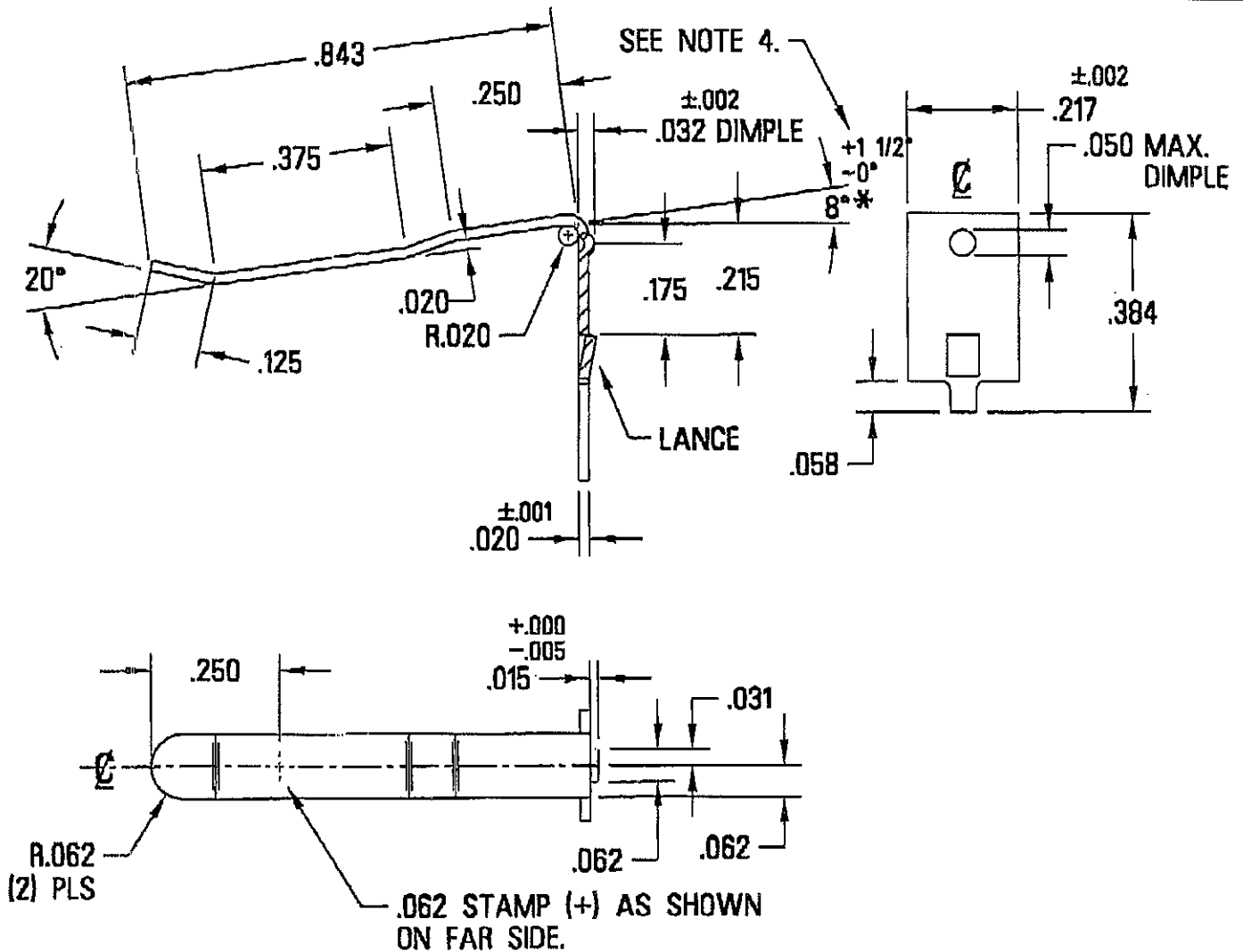


THIS DOCUMENT IS THE PROPERTY OF
KEYSTONE ELECTRONICS CORP. AND
SHALL NOT BE REPRODUCED, DISTRIBUTED
OR USED AS A BASIS FOR MANUFACTURE
WITHOUT PRIOR WRITTEN PERMISSION
FROM KEYSTONE ELECTRONICS CORP.



NOTE:

1. BREAK ALL SHARP EDGES
2. HEAT TREAT TO SPRING TEMPER
ROCKWELL C46-48
3. .0002-.0003 DUPLEX NICKEL PLATE
OVER .000100-.000150 COPPER
BAKE IMMEDIATELY AFTER PLATING 375°
FOR 6 HOURS.
4. * = CRITICAL DIMENSION,
MUST MAINTAIN TOLERANCE.

KEYSTONE ELECTRONICS CORP.			
ASTORIA, N.Y. 11105-2017			
PART NAME		TOP CONTACT	
MATERIAL			
.020 TH'K ANNEALED SPRING STEEL			
FINISH		DRN BY	DATE
AS NOTED		BOONE	3/21/01
		APP'D	SCALE
			3X
TOLERANCES	INCH (MM)	CODE	DWG NO.
DECIMAL	±.005 [±0.15]	C	9-105-217
ANGULAR	± 1/2°		
UNLESS OTHERWISE SPECIFIED			

DATE	DESCRIPTION	REV.