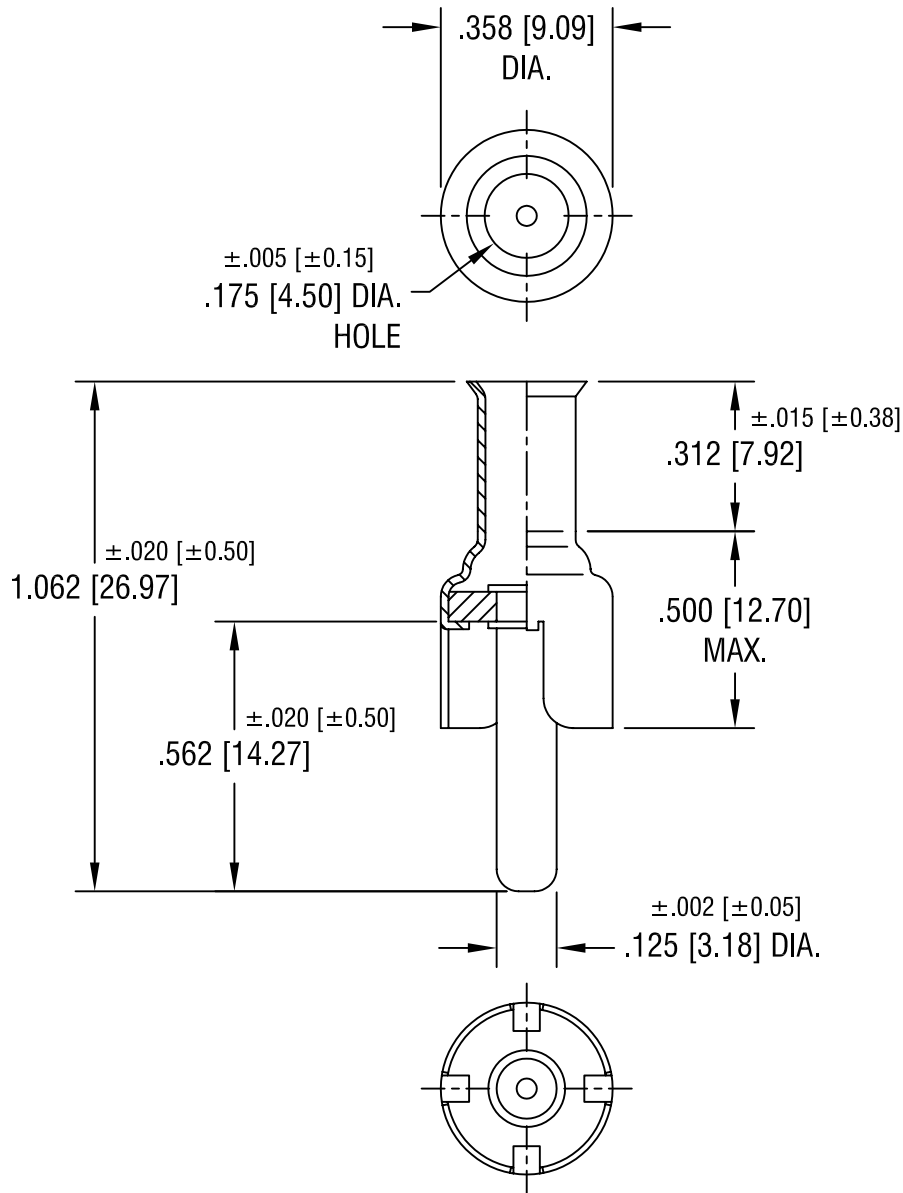


THIS DOCUMENT IS THE PROPERTY OF
KEYSTONE ELECTRONICS CORP. AND
SHALL NOT BE REPRODUCED, DISTRIBUTED
OR USED AS A BASIS FOR MANUFACTURE
WITHOUT PRIOR WRITTEN PERMISSION
FROM KEYSTONE ELECTRONICS CORP.



NOTES:

1. SHELL: STEEL, TIN PLATE
2. PIN: BRASS, NICKEL PLATE

KEYSTONE ELECTRONICS CORP.			
ASTORIA, N.Y. 11105-2017			
PART NAME		PHONO PLUG	
MATERIAL		AS NOTED	
FINISH		DRN BY	DATE
AS NOTED		BOONE	2.17.82
		APP'D	SCALE
			2.5X
DATE	DESCRIPTION	REV.	DWG NO.
11.11.96	CHANGE AS PER ECR 96-053	A	567
TOLERANCES		INCH	[MM]
DECIMAL		$\pm .010$	$[\pm 0.25]$
ANGULAR		$\pm 1^\circ$	
UNLESS OTHERWISE SPECIFIED		CODE	C/M

11.11.96

CHANGE AS PER ECR 96-053

A

REV.

DESCRIPTION

DATE

DWG NO.

567

CODE

C/M

DRN BY
BOONE

DATE
2.17.82

APP'D

SCALE
2.5X

TOLERANCES

DECIMAL

ANGULAR

UNLESS OTHERWISE SPECIFIED