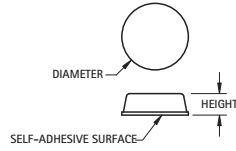


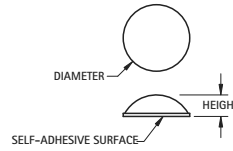
ADHESIVE BUMPERS

Applies quickly and easily. Prevents nicks, scratches, scuffs, vibration, slippage and noise. Easy peel and stick mounting. Crack resistant. High coefficient of friction. Sold in sheets.

FLAT



DOMED



MATERIAL: Molded Polyurethane

BLACK CAT. NO.	CLEAR CAT. NO.	DIAMETER	HEIGHT	PARTS/SHEET
780-B	780-C	.375 (9.5)	.125 (3.2)	300
781-B	781-C	.500 (12.7)	.060 (1.5)	200
782-B	782-C	.500 (12.7)	.140 (3.6)	200

MATERIAL: Molded Polyurethane

BLACK CAT. NO.	CLEAR CAT. NO.	DIAMETER	HEIGHT	PARTS/SHEET
783-B	783-C	.250 (6.4)	.062 (1.6)	578
784-B	784-C	.335 (8.5)	.085 (2.2)	450
785-B	785-C	.440 (11.2)	.200 (5.1)	242

RECESSED BUMPERS

Provides excellent traction and shock absorbing qualities. available with or without Mold-in Washers.



FIG. 1

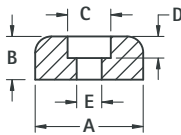


FIG. 2 Mold-In Washer

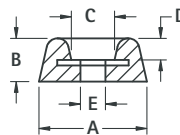
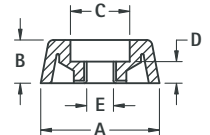


FIG. 3 Mold-In Washer



MATERIAL: Rubber, BUNA S (Figs. 1 & 2), EPDN

MATERIAL: Rubber, BUNA S (Figs. 1 & 2), EPDN

MATERIAL: EPDN Rubber

CAT. NO.	FIG.	A	B	C	D	E	SCREW SIZE
720	1	.500 (12.7)	.250 (6.4)	.250 (6.4)	.187 (4.7)	.125 (3.2)	# 4
721	1	.625 (15.9)	.312 (7.9)	.250 (6.4)	.187 (4.7)	.125 (3.2)	# 4
722	1	.718 (18.2)	.437 (11.1)	.250 (6.4)	.218 (5.5)	.125 (3.2)	# 4
723	2	.937 (23.8)	.375 (9.5)	.375 (9.5)	.218 (5.5)	.187 (4.7)	# 8
724*	3	.687 (17.4)	.250 (6.4)	.343 (8.7)	.125 (3.2)	.155 (3.9)	# 6
725*	3	.875 (22.2)	.312 (7.9)	.406 (10.3)	.187 (4.7)	.187 (4.7)	# 8
726*	3	1.062 (27.0)	.437 (11.1)	.468 (11.9)	.234 (5.9)	.200 (5.1)	# 10
727	3	.562 (14.3)	.375 (9.5)	.218 (5.5)	.187 (4.7)	.115 (2.9)	# 4
728	3	.750 (19.1)	.437 (11.1)	.265 (6.7)	.250 (6.4)	.148 (3.8)	# 6
729	3	.937 (23.8)	.625 (15.9)	.359 (9.1)	.328 (8.3)	.174 (4.4)	# 8

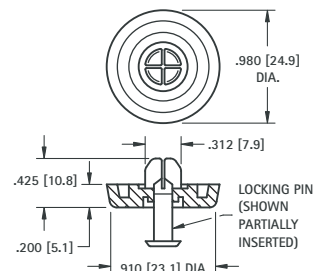
*Grey - all others Black

SELF-LOCKING BUMPER FOOT



- A unique easy-to-install self-locking bumper foot
- Two piece assembly, furnished pre-assembled
- Vibration absorbing and skid resistant
- Mounts without screws or tools

Recommended Mounting Hole: .305 (7.8) diameter



MATERIAL:

Foot: Santoprene, Black **Pin:** Polypropylene, Black

CAT. NO. 717